

NONPARTISAN VOTERS GUIDE

GENERAL ELECTION » NOVEMBER 8, 2022

**Governor » Lieutenant Governor » Attorney General » Comptroller of Public Accounts »
Commissioner of General Land Office » Commissioner of Agriculture »
Railroad Commissioner » Texas Supreme Court » Texas Court of Criminal Appeals »
State Board of Education » Court of Appeals**

**EARLY VOTING: October 24–November 4, 2022 »
ELECTION DAY: November 8, 2022. Polls open 7 a.m. to 7 p.m.**

» VOTING IN TEXAS

All Texas voters are encouraged to vote in the General Election!

The November 2022 General Election will determine who will lead us at the state level, represent us in Congress, rule on important civil and criminal cases, set the Texas school curriculum and run our cities and counties. All the races will have an impact on the lives of Texans. As you know, the League of Women Voters of Texas is working hard to make sure Texas voters have the information on candidates they need to make informed decisions.

Texas no longer has straight-ticket voting. So, voters in Texas cannot check one box to vote for one party's full slate of candidates. Instead, voters mark a box for their candidate choice for each race in which they want to vote. Candidates representing a party are identified with a letter following their name: "R" for Republican, "D" for Democrat, "L" for Libertarian, or "G" for Green. Candidates in many local elections are nonpartisan and do not represent a party.

» EMPOWERING VOTERS. DEFENDING DEMOCRACY.

» VOTERS GUIDE CONTENTS

League Voters Guide Policy	2
Be a Texas Voter!	3
Voter ID—What to Take to the Polls	5
Governor	6
Lieutenant Governor	9
Attorney General	11
Comptroller of Public Accounts	12
Commissioner of General Land Office	14
Commissioner of Agriculture	16
Railroad Commissioner	17
Texas Supreme Court	20
Texas Court of Criminal Appeals	24
State Board of Education	26
Court of Appeals	37
Helpful Contacts & Websites	38
Local Leagues in Texas	38
Sponsors and Major Donors	39



» ABOUT THIS VOTERS GUIDE

This *Voters Guide* is funded and published by the League of Women Voters of Texas. The League never supports or opposes political candidates or political parties.

» ONLINE VOTERS GUIDE

The online, interactive version of the *Voters Guide* is at **VOTE411.org**. By entering your address, you can view races and candidates on your ballot, compare candidates' responses to unbiased questions posed by the League, and create a print-out of your choices to take to the polls. If there is a local League in your community, you can also find information on any local races.



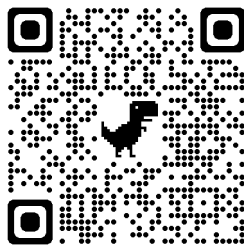
» SIGN UP FOR VOTING REMINDERS!

To get voting reminders on your phone, text LWVTX to 80123.



» SUPPORT THE VOTERS GUIDE

Help us fund the cost of this valuable resource for Texas voters by making a secure donation online at **lwtexas.org**, or by mailing the payment to the League of Women Voters of Texas, 1212 Guadalupe #107, Austin, TX 78701.



» LEAGUE VOTERS GUIDE POLICY

- For the races covered in the *Voters Guide*, all candidates on the ballot with opponents are invited to participate.
- Unopposed candidates are listed, but not invited to participate.
- Candidate replies are printed without editing or verification. The League assumes no responsibility for the content of the candidate responses.
- Negative references to opponents (including officeholders) or specific persons are not allowed.
- If the League determines a response does not meet the criteria listed in this *Voters Guide* and, if time allows, the candidate will be contacted and given an opportunity to reword that response. If not changed, in place of a response that does not meet the criteria, the *Voters Guide* will state "Candidate's response does not meet the criteria listed in this *Voters Guide*."
- Videos that do not comply with the criteria listed in this *Voters Guide* are removed.
- Links to websites that are not official campaign websites or social media pages are removed.
- The *Voters Guide* is organized by office, with candidates listed by party, including the names of unopposed candidates. For primary and runoff elections, the order of the parties is alternated each election year. For general elections, the parties are listed in ballot order.
- Candidates with no photo in this *Voters Guide* did not submit a photo by the print deadline.
- Candidates who do not respond to our questionnaire by the print deadline are listed with the notation "No response received by the print deadline". If submitted after the print deadline, their information may be found at **VOTE411.org**.

© 2022 League of Women Voters of Texas | lwtexas.org

The *Voters Guide* is protected by copyright. For permission to duplicate the *Guide*, please call the LWV Texas office at 512-472-1100. Any use of the League of Women Voters name in campaign advertising or literature has not been authorized by the League.



» BE A TEXAS VOTER!

The League of Women Voters of Texas fights for the freedom of ALL Texans to vote. Your vote is your voice . . . below are the ways to exercise your right to vote. Whichever way you choose to vote, be sure to first check your voter registration status at **VoteTexas.gov**! You must be registered before you can vote!

» VOTE BY MAIL

- You can vote by mail if you are:
 - 65 years or older
 - Sick or disabled
 - Out of the county during early voting and on Election Day
 - Expecting to give birth within 3 weeks before or after Election Day
 - In jail, but otherwise eligible to vote.
- To vote by mail in Texas:
 1. Get an application:
 - Download or print the application from **lwvtexas.org**, **VoteTexas.gov**, **OR**
 - Call your County Election Office to request an application.
 2. Fill out the application:
 - Provide all the required and requested voter information, including:
 - Your contact information, in case there's an issue with your application.
 - Your ID numbers
 - Your TX Drivers License or TX Personal ID number, **AND**
 - The last four digits of your social security number.
 - Mailing address to where your ballot will be sent.
 - Reason for voting by mail.
 - The election for which you are requesting a ballot.
 - If 65 or older, or disabled, you can check "Annual Application" to receive ballots for all elections for that calendar year.
 - In even years, mark in which party primary and runoff election you want to vote.
 - Sign and date the application.
 - If somebody assisted you with the application or witnessed your signature or mark, they must complete the section provided on the application.
 3. Return your completed application as soon as you can.
 - The application must be received at least 11 days before Election Day. You can:
 - Mail the application to the County Election Office, addressed to the Early Voting Clerk, **OR**
 - Hand deliver your application to your County Election Office.
 4. When your ballot arrives, mark and pack it:
 - Mark your ballot with a black or blue pen.
 - Fill out the ovals completely—do not mark with X's, checks or circles.
 - Put your ballot in the ballot envelope and seal it. Put only one ballot in each ballot envelope.
 - Place the ballot envelope in the carrier envelope—wait to seal the carrier envelope!

» BE A TEXAS VOTER! (*continued*)

5. Fill out the carrier envelope with the following information:

- Your ID numbers
 - Your TX Drivers License or TX Personal ID number, **AND**
 - The last four digits of your social security number.
- Your contact information, in case there's an issue with your ballot.
- Seal the carrier envelope in both places, then **sign over the flap**.
- If an assistant helps you complete the ballot, they must fill out the required information in the space provided on the carrier envelope.
- If you're unable to sign, your witness must fill out the required information in the space provided on the carrier envelope.

6. Return your ballot as soon as you can!

- Your ballot must be received by 7:00 p.m. on Election Day. You can return it using one of the following:
 - Mail your ballot by the U.S. Postal Service, using two stamps if you are not sure. You can also use FedEx, UPS or DHL to return your ballot. **OR**
 - Hand deliver your ballot in person to your main County Election Office on Election Day while the polls are open. You must show a photo ID. **OR**
 - Vote in person instead:
 - Take your mail ballot to your polling place during early voting or on Election Day to vote a regular ballot.
 - If you lose or forget your mail ballot, you can vote using a provisional ballot.

7. Track your ballot at **VoteTexas.gov**!

» VOTE EARLY IN PERSONA

- You may vote early at any voting location in your county.
- Find polling places at **VOTE411.org** or on your county election website.
- If you have a disability, you may request to move ahead of other voters in line.
- If in line before the poll closing time, you must be allowed to cast a ballot.

» VOTE ON ELECTION DAY

- In some counties, you can vote at any polling place. In other counties, you can vote only at your precinct.
- Find polling places at **VOTE411.org** or on your county election website.
- If you have a disability, you may request to move ahead of other voters in line.
- If in line before the poll closing time, you must be allowed to cast a ballot.

» VOTE IN PERSON USING CURBSIDE VOTING

- If you are physically unable to enter the polling place without personal assistance or likelihood of injuring your health, you may ask that an election officer bring a ballot to your car.
- After you mark your ballot, give it to the election officer or hand it to a companion to deposit in the ballot box for you.
- It is best to call ahead so election officials will expect you!

» VOTE EVEN IF YOU ARE A SUSPENDED VOTER

You can still vote if your voter registration is in suspense! "Suspense" means that your county voter registrar needs to confirm your voting address.

» VOTE A LIMITED BALLOT IF YOU HAVE MOVED BUT NOT RE-REGISTERED

If you have moved to a new county and have not re-registered in the new county by the registration deadline, you may be eligible to vote a limited ballot in your new county. A limited ballot is one that allows you to vote on candidates and measures that are on the ballot for both your former county and your new county, such as statewide and national races. Voting a limited ballot is only available during early voting at the main early voting polling place.



» VOTER ID: WHAT TO TAKE TO THE POLLS

You may use one of seven forms of photo ID, listed below.

- Texas Driver License
- Texas Election Identification Certificate
- Texas Personal Identification Card issued by the Department of Public Safety (DPS)
- Texas Handgun License issued by DPS
- US Military Identification Card containing the person's photograph
- US Citizenship Certificate containing the person's photograph
- US Passport (book or card)

Note:

- IDs may have expired up to four years.
- Persons 70 years or older may use an expired ID, regardless of expiration date.
- ID address does not have to match the voter registration address.
- The name on the photo ID should match the voter registration card or be "substantially similar." If the names don't match exactly but are substantially similar, the voter will initial a box for a similar name when signing in to vote.

Registered voters without photo ID, who cannot reasonably obtain one, may sign a form (described below) and present the original or a copy of one of the following documents with the voters name and address to vote a regular ballot:

- Texas voter registration card
- Certified birth certificate
- Current utility bill
- Bank statement
- Government check
- Paycheck
- Any other government document such as an out of state driver's license or expired Texas driver's license.

The form to be filled out by registered voters without a photo ID is a "Voter's Declaration of Reasonable Impediment or Difficulty". The voter must mark on the form one of the following reasons for not providing a photo ID:

- Lack of transportation
- Disability or illness
- Lack of birth certificate or other documents needed to obtain an acceptable form of photo ID
- Work schedule
- Family responsibilities
- Lost or stolen identification
- Acceptable form of photo ID applied for but not received.

» VOTER HARASSMENT

- Election officials cannot question a voter about the use of an ID type.
- Poll watchers may never question a voter about Voter ID issues.
- If you are harassed, call or text Election Protection at 866-687-8683!

GOVERNOR

Four-year term. The governor is the chief executive of the state. They appoint members to boards and commissions; appoint statewide executive officials, state judges and district attorneys when vacancies occur; declare special elections to fill vacancies in certain elected offices; deliver the State of the State address; provide guidance to the legislature; call special sessions of the legislature and set the agenda; and serve as commander-in-chief of the state's military forces. The governor can veto legislation (including a line-item veto on appropriations), sign legislation, or allow it to become law without their signature. Current Salary: \$153,750

» QUESTIONS TO CANDIDATES

Gun Safety: What steps, if any, should be taken to curb gun violence in our communities?

Economy: What can be done at the state level to address the high rate of inflation and other economic challenges faced by Texans?

Power Grid: What can be done to ensure that Texas has sufficient power during extreme weather conditions?

Elections: Considering the high rate of vote-by-mail ballot rejections in the 2022 Primary Elections, what changes, if any, are needed to election laws?

Immigration: What is the role of the state government in addressing immigration at the border?

Abortion: How would you address the economic and health consequences for those who cannot obtain abortions in Texas?

» Greg Abbott (R)

No response received by the print deadline



» Beto O'Rourke (D)

Gun Safety: I will always prioritize the lives of our children and the safety of our fellow Texans over any special

interest. As governor, I will fight for bipartisan, commonsense gun safety measures that the majority of Texans agree on, like raising the minimum age to purchase an assault rifle to 21, implementing universal background checks, and establishing a red flag law system.

Economy: I'll lower property taxes by closing the loopholes that allow wealthy corporations to push their tax burden onto homeowners and small businesses. I'll reduce energy bills by fixing the problems with the Texas power grid, investing in energy efficiency, and providing direct bill assistance. And I'll raise the minimum wage

to \$15/hour so that hardworking Texans can afford to support their families.

Power Grid: To prevent another deadly blackout and lower Texans' skyrocketing electricity bills, I will connect Texas to the national grid, weatherize all elements of our energy infrastructure, invest in energy efficiency, build out more transmission and storage capacity, and establish mechanisms to prevent energy companies from price gouging ratepayers.

Elections: I will ensure every eligible voter in Texas can freely and fairly cast their ballot, including by repealing onerous and purposefully confusing vote-by-mail procedures, implementing online and same-day voter registration, guaranteeing easy, equitable access to polling places, and establishing independent redistricting commissions to end gerrymandering.

» Beto O'Rourke (D) (continued)

Immigration: The state government should provide local communities the support they need to respond to migration flows at the border in a safe and orderly fashion. That can include support for migrant processing, shelter, and transportation—as long as it is done in a way that reflects our values, upholds U.S. asylum laws, and refrains from wasting taxpayer dollars on political stunts instead of solutions.



» Mark Tippetts (L)

Gun Safety: To meet Texans' security and education preferences, I support a school choice system so all Texans can afford to send their children to private, public, or home school. Cut taxes and government spending to create a more vibrant economy that draws people away from criminal activity. Curb drug war-related violence by legalizing marijuana.

Economy: As a Libertarian, I'm in favor of reducing government spending and lower taxes at all levels. Inflation is caused by the federal government printing more money to cover its massive spending which devalues the dollar. Currently a few insiders grant targeted tax cuts and incentives to get businesses to move here. Instead, I support taxing all businesses at the same, but a lower rate overall.

Power Grid: I built a hydroelectric plant in Belize, Central America and know that bad decisions by government regulators have caused our power grid problems and outages. We need to get the governments out of the energy management business so one bad decision-maker can't harm the entire state. We need to eliminate the current taxes and subsidies on all forms of energy and allow new nuclear generation.

Abortion: I will fight to repeal Texas' extreme abortion laws that endanger the lives of women and make no exception for rape or incest. I will also strengthen investments in women's health and family planning programs to increase access to contraception and cancer screenings, and combat Texas' maternal mortality crisis by expanding Medicaid and increasing pregnancy Medicaid to one-year postpartum.

Campaign Website: <https://www.betofortexas.com>

Elections: The Republican and Democratic parties passed laws imposing new fees on Libertarians which make it harder for Libertarians and others to run for office. I helped file lawsuits to overturn these bad laws. Republicans and Democrats shouldn't get to outlaw competition. Let the people decide who to vote for. I support efforts that make it convenient to vote, while protecting election integrity.

Immigration: It's nearly impossible to immigrate to America legally. We could end most illegal immigration by enacting a good comprehensive immigration policy, making it easier for honest, hardworking people to come work and live here legally. Reform requires federal action. Instead of seeing foreigners as a problem, we should welcome them as potential friends, business partners, and customers.

Abortion: Recognizing that abortion is a sensitive issue, and that people can hold good-faith views on all sides, I believe that government should be kept out of the matter, leaving the question to each person for their conscientious consideration. A group of mostly men legislators should not be able to tell my daughters what they can and can't do with their bodies.

Campaign Website: <https://www.mark4gov.com/>



» Delilah Barrios (G)

Gun Safety: Retailers must limit the amount and frequency of sales of guns and ammunition. The police budget should be limited as well and resources

should go towards housing, childcare, education, gardens, transportation etc. I am a supporter of community police because the police criminalize poverty and mental health.

Economy: We need to halt all fossil fuel subsidies. We should use those funds for universal healthcare and a living wage. We also need public transportation, sustainable farming and renewable energy. Free education and work programs in high school would help boost job growth. As well as a just transition. Legalizing marijuana would boost our economy too.

Power Grid: Making all utilities publicly owned, investing more into wind and solar and expanding our grid to neighboring states or countries for better reliability.

Elections: Several changes are needed. I support

ranked choice voting and also proportional representation. I support same day voting registration and voting mail, we need better protections for voters to have their voices heard.

Immigration: The role of our state is to be good neighbors. To have compassion and offer opportunities both here and in Mexico. We rely heavily on the exploitation of the global south. I would like to see Texas make amendments and speed up the immigration process while also supporting Mexico's economy as well. A sustainable partnership would be ideal.

Abortion: Statewide single payer would eliminate the insurance companies ability to cause harm to patients. I would enact a law that would provide protection to patients and providers. Anyone deliberately interfering with patient care due to religious or other will face a 50k+ fine plus jail. This is only a short term solution while we set up statewide single payer and better patient rights for autonomy.

Campaign Website: <https://delilahfortexas.com>

LIEUTENANT GOVERNOR

Four-year term. The lieutenant governor is powerful because of their position as president of the Texas Senate, where they appoint the chairs and vice-chairs of committees; appoint senators to committees; assign bills to committees; and control the Senate's agenda. They are also a member of several commissions and boards, and serve as governor in the governor's absence. Current Salary: As Senate president: \$9,612 plus \$190 per diem. When serving in the governor's absence: that of the governor.

» QUESTIONS TO CANDIDATES

Gun Safety: What steps, if any, should be taken to curb gun violence in our communities?

Economy: What can be done at the state level to address the high rate of inflation and other economic challenges faced by Texans?

Power Grid: What can be done to ensure that Texas has sufficient power during extreme weather conditions?

Public Education: What is your position on using public funds for school vouchers for private schools and why?

Elections: Considering the high rate of vote-by-mail ballot rejections in the 2022 Primary Elections, what changes, if any, are needed to election laws?

Abortion: How would you address the economic and health consequences for those who cannot obtain abortions in Texas?

» Dan Patrick (R)

No response received by the print deadline



» Mike Collier (D)

Gun Safety: As Lt. Governor, I will work with community leaders and law enforcement to raise the age to purchase a firearm to 21, universal background checks, safe storage requirements, and a waiting period to buy a semi-automatic firearms. These actions must be undertaken before the start of the next school year because the time to stop the next school shooting is now.

Economy: Over the last eight years, Texans have faced skyrocketing property taxes. Thanks to tax loopholes, Texans are paying more so that corporations can pay less. I will close those loopholes in order to bring down taxes for folks across the state and make corporations pay their fair share.

Power Grid: As a lifelong businessman and energy expert, I will make fixing the power grid amongst my top priorities. I will work to bring down energy bills for Texans by investing in producing more energy, investing in energy storage and smart grid technology, and establishing emergency tie-ins to the national power grid.

Public Education: As Lt. Governor, I will work tirelessly to fund our local schools. I am opposed to efforts to divert taxpayer dollars to unaccountable, private school vouchers that would raise our property taxes and defund our schools, especially hurting rural Texas.

Elections: Texas voters who make a good faith attempt to cast a ballot should not have their voice silenced due to discriminatory and opaque election laws past by the Texas Legislature. If I led the Senate as Lt. Governor, I would undo the suppressive changes made by SB1 and improve the ballot cure process.

Abortion: Under current law, all abortions are banned in Texas, including in cases of rape or incest. As Lt. Governor, I will work to codify the protections of Roe v. Wade into the books of law—returning the power to make decisions to doctors and their patients, as well as invest in pre-natal and maternal healthcare for women across Texas.

Campaign Website: <https://CollierForTexas.com>

» Shanna Steele (L)

Gun Safety: I support the Second Amendment. Ending the war on drugs, treating addiction, and improving economic conditions would curb gun violence.

Economy: Legalizing marijuana and eliminating property taxes would be a good start to increasing the GDP and improve the economic challenges faced by Texans.

Power Grid: There are several hydroelectric power plants that used to be connected to the power grid that are no longer in operation. By fixing these power plants and other parts of the power grid infrastructure we will be on the right track.

Public Education: Parents should be able to choose the school that best fits their child's needs.

Elections: The changes needed start with removing the duopoly created by the Democrats and Republicans who make it difficult for those who want to vote. [*Candidate's response does not meet the criteria listed in this Voters Guide.*]

Abortion: I would remove state government from healthcare decisions that should be made between doctors and their patients. In addition, I would like to make the adoption process easier for those who choose adoption over abortion.

ATTORNEY GENERAL

Four-year term. The attorney general is the chief law enforcement officer of the state; represents the state and state officials in legal matters; issues opinions; oversees collection of child support; administers the crime victims compensation fund; enforces the open records/open meetings acts; approves public bond issues; and enforces consumer regulations. Current salary: \$153,750

» QUESTIONS TO CANDIDATES

Elections: How would you protect Texans' freedom to vote while maintaining safe and secure elections?

Ethics: How can voters be assured that campaign donations will not impact how the Attorney General interprets and enforces the law?

Children's Health: Do you believe the government should become involved in healthcare decisions made for children by their parents and physicians? Please explain.

Immigration: What should be the role of the Texas Attorney General regarding immigration law and policy?

Priorities: What would be your highest priorities for the next four years, and how do you intend to accomplish them?

» **Ken Paxton (R)** No response received by the print deadline



» Rochelle Mercedes Garza (D)

Elections: As Attorney General, I will dismantle the wasteful "election integrity unit" — which is really about enforcing the GOP's voter suppression measures, instead of protecting voting rights — and replace it with a voter protection unit under a fully funded Civil Rights Division. I will ensure voting rights are protected, not undermined, especially for voters of color.

Ethics: We must bring about fundamental change in the office of the Attorney General. I'm running for Texas AG to restore integrity, transparency and trust to the office. That means ending the culture of corruption and pay-to-play politics. As AG, I will not be beholden to powerful industries; instead I will answer to the people of Texas and respect the rule of law.

Children's Health: As a parent, I am deeply committed to ensuring the office of the Attorney General protects all Texans. Decisions about the health of children

are extremely personal, and should only be made between parents, physicians and the child, when appropriate. Politicians have no place in the decision-making process about a child's medical treatment.

Immigration: Immigration enforcement falls under federal jurisdiction. As an immigration attorney and border native, I understand the complexities of our immigration system. I have litigated against bad policies that have created a humanitarian crisis at the border. Texas' enforcement efforts at the border are unconstitutional, wasteful and only worsen the issue.

Priorities: As AG, I will protect the rights of all Texans. I'll root out corruption and bring back integrity and transparency to the AG's office. I'll create a Civil Rights Division to protect the safety, privacy, and dignity of Texans, and I'll prioritize consumer protections to hold bad actors accountable. Most importantly, I will fight to restore abortion rights in Texas.

Campaign Website: <https://RochelleGarzaforTexas.com>

» **Mark Ash (L)** No response received by the print deadline

COMPTROLLER OF PUBLIC ACCOUNTS

Four-year term. The comptroller is the chief financial officer of the state; collects state taxes and fees; pays the state's bills; provides revenue estimates to the legislature; certifies the budget; reports the condition of the state's finances; and provides economic development assistance to local governments and private businesses. Current salary: \$153,750

» QUESTIONS TO CANDIDATES

Rainy Day Fund: What is the optimal amount to be held in the Rainy Day Fund? How would you balance paying down the state's debt vs. responding to urgent needs?

Taxes: What is the proper balance of tax revenues sources in order to fairly fund state government, including public schools?

Financial Obligations: How can we ensure that Texas meets its long-term financial obligations such as infrastructure maintenance, state employee pensions and health care coverage for public school teachers and employees?

Priorities: What would be your highest priorities for the next four years, and how do you intend to accomplish them?



» Glenn Hegar (R)

Rainy Day Fund: Texas is blessed to have a strong Rainy Day Fund, which is designed and should be used to smooth out the state's revenues during an economic downturn, to assist in a disaster, and for one-time expenses that are strategic for Texas' economic health and well-being. I fought to manage these dollars more effectively to guard against inflation and protect them for generations.

Taxes: Funding public schools in Texas has been a shared burden split between state funds and local property taxes. Until recently the local share was allowed to grow unchecked creating increased pressure on local property taxes. I helped compress local property tax rates and rebalance the burden between state funds and local taxpayers. Our strong economic recovery now puts us in position to do more.

Financial Obligations: Since practically my first day in office I have sought to shine a light on the state's balance sheet and the need to address our long-term obligations. I fought to address threats to our state's fiscal health and ensure Texas teachers can access quality healthcare. I helped lawmakers pass historic pension reform to put our state on firm footing and avoid credit downgrades.

Priorities: I will continue to focus on the core constitutional duties of my office and that means maintaining my attention on the Texas economy. Navigating the last few years has been difficult, but I have always remained focused on the trends, challenges and opportunities in our state economy. We must fight to keep Texas a place where freedom creates new opportunities for families and businesses to thrive.

Campaign Website: <https://glennhegar.com>

COMPTROLLER OF PUBLIC ACCOUNTS

(continued)



» Janet T. Dudding (D)

Rainy Day Fund: Government Finance Officers Association recommends a minimum of 2 months of regular revenue or regular expenditures be maintained in a rainy day fund. Typically, rainy day monies mitigate the risk of unstable revenues or unexpected expenditures. Natural disasters fall into the 2nd category & Texas ranks 1st in these. The state of Texas' general obligation debt currently is rated Aaa/AAA/ AAA/AAA.

Taxes: Find new revenue for Charter & 313. Texas Legislature added \$6.5 billion dollars in funding to public schools in 2019. Yet per a 2021 SPLC report, Texas currently ranks 40th in the nation. New rev streams are needed. Legalizing adult-use cannabis could bring \$1 billion in tax revenue (and decriminalization could save \$300 million). Look at "green" taxes to build revenue streams from green energy.

Financial Obligations: Re infrastructure, accept & leverage federal dollars. With fuel efficient vehicles, look at creating a revenue from alternative fuels to maintain roads. Public school benefits: employees in all but ~18 school districts do not participate in social security and they should. Public school employees should have excellent healthcare w/o sharing premium costs. Reduce public school property tax reliance

Priorities: Statute defines Comptroller as state's 'sole' accountant. We've never had a CPA as our Comptroller. I will be the watchdog over tax dollars, answerable to Texans not special interests. As a hurricane survivor, climate-disasters are personal to me and I will work to mitigate the root cause as well as our risk exposure through SECO. Expand broadband by partnering with local govt utilities & coops.

Campaign Website: <https://www.janetdudding4texas.com/>



» V. Alonzo Echevarria-Garza (L)

Rainy Day Fund: I would suggest six months of operating expenses is a good start. However, this depends on the mitigating policies implemented by the state.

Taxes: I don't believe there is, strictly speaking, a proper balance that policy makers should adhere to, or fix to fairly fund state government or public schools. The question is not the balance amounts, but what mechanisms are in place to adapt.

Financial Obligations: budget analyst and pol-

icy makers must utilize the social discount rate in performing cash discounting of projects, and cost benefit analysis.

Priorities: The highest priority is to implement policies that may improve operations, optimize benefits, and offer flexibility in dealing with financial challenges. These policies will not only improve conditions in four year, but beyond my own term in office.

Campaign Website: <https://www.alonzo-echavarria-for-texas-state-comptroller.com/>

COMMISSIONER OF GENERAL LAND OFFICE

Four-year term. As head of the General Land Office, the commissioner manages state lands, including oil and gas properties (which supply funds to the Permanent School Fund) and the Alamo. The commissioner chairs the Veterans Land Board, which administers programs for Texas veterans, and is responsible for environmental protection of Texas' coast. Other state boards chaired include the School Land Board and the Coastal Coordination Advisory Committee. Current salary: \$140,938

» QUESTIONS TO CANDIDATES

Allocation of Federal Funds: When federal funds for natural disaster relief are allocated, how would you ensure that communities with the highest needs are prioritized?

The Alamo: As the head of the agency that manages the Alamo, what story should it tell?

Coastal Planning: What measures would you implement to restore and protect the Texas coast, wetlands, and structures along the coast to minimize damage from major storms?

Priorities: What would be your highest priorities for the next four years, and how do you intend to accomplish them?



» Dawn Buckingham (R)

Allocation of Federal Funds:

When catastrophe strikes the Texas coast, I'll be there every step of the way to help Texans recover. I grew up in a small town along the Texas coast, so I know firsthand just how devastating a major hurricane can be and what people need in its aftermath. As Land Commissioner, I'll make sure the GLO is fully prepared to respond to catastrophic storms that impact our coast.

The Alamo: I am, and always have been, a champion for the preservation of our Texas History. As a State Senator, I laid down the legal challenge to keep the Cenotaph in its rightful place out front. Our Alamo should tell the story of Texas' revolution and of course the battle at the Alamo itself.

Coastal Planning: Our coastal communities de-

serve a Land Commissioner that is as tough and resilient as they are. As a state senator, I am proud to have supported measures to fund flood mitigation, prepare for construction of a coastal spine, and more. Investing in coastal infrastructure to mitigate the effects of hurricanes is just smart. We can save lives and protect property with these investments.

Priorities: I'm running for Texas Land Commissioner to improve the lives of all Texans and protect the Texas we know and love for future generations. As the first female Land Commissioner in history, my priorities are unleashing Texas oil and gas production, keeping our communities safe by securing the border, and protecting the Permanent School Fund to ensure that every child has a great public education.

Campaign Website: <https://www.dawnbuckingham.com>

COMMISSIONER OF GENERAL LAND OFFICE

(continued)



» Jay Kleberg (D)

Allocation of Federal Funds: Centering the voices of communities most impacted by natural disasters and least-

supported by our government is a priority for my campaign and will continue to be a priority for me as commissioner. As Land Commissioner, I will emphasize the reformation of disaster relief and recovery programs at the General Land Office. This will ensure Texans most affected have the proper funding.

The Alamo: The story of the Alamo is as far reaching and complex as Texas itself. The Alamo is a symbol of Texan and Tejano pride and we must honor those contributions to Texas. It's also important to consider the role of early Black Texans and slavery in our history, as well as indigenous groups who inhabited the site for centuries. All of these groups should have input in the conversation on the Alamo.

Coastal Planning: An example of measures I support is the nearly \$30 billion investment in protection measures for the Texas Gulf Coast, including a coastal storm barrier in Galveston and beach restoration efforts on South Padre Island. As Land Commissioner, I would prioritize projects like these and work with all stakeholders to secure funding for these projects and other disaster mitigation and recovery efforts.

Priorities: Reforming the GLO disaster programs to ensure all Texans can recover from the last storm and prepare for the next one. Expanding carbon storage opportunities by opening leases in Texas' submerged lands. Responsibly expanding renewable energy production on state lands to diversify our revenue base. Reforming and modernizing the Veterans Land Board to expand and improve Veteran services in Texas.

Campaign Website: <https://www.jay4tx.com/>

» Alfred Molison, Jr. (G)

No response received by the print deadline

COMMISSIONER OF AGRICULTURE

Four-year term. The agriculture commissioner's principal job is promoting Texas' agricultural products. In that capacity, the commissioner facilitates trade and marketing of agricultural products; regulates weights and measures; regulates pesticide use and application; certifies organically produced products; administers the National School Lunch and School Breakfast programs; provides financial help to farmers; and helps solve issues related to natural disasters. Current salary: \$140,938

» QUESTIONS TO CANDIDATES

Inflation: What can be done to help Texas farmers face rising costs and supply chain disruptions?

Water Resources: As water resources become more scarce, what would you do to balance the needs of farmers and the growing demands of urban areas?

Opportunities: Should Texas diversify its agriculture to include cannabis, biofuels or other crops? Why or why not?

Priorities: What are the three most challenging issues for Texas farmers for the next four years, and what are your plans for dealing with number one on your list?

» Sid Miller (R)

No response received by the print deadline



» Susan Hays (D)

Inflation: Accurate analysis of supply-chain choke points followed by government action to alleviate them. For example, the meat packing industry is a Wall Street-driven, near-monopoly with ranchers having to pay to reserve time to process their cattle. I will aggressively draw down federal dollars to help Texas entrepreneurs open and expand local operations which will in turn keep those profits in Texas.

Water Resources: The Republicans have failed to even try to solve this problem. The Department of Agriculture (TDA) can research & promote sustainable practices and less-thirsty crops, but must work across agencies such as the Land Office, the Water Development Board, local water districts, & others, and with the Legislature for a comprehensive state plan to protect water quality and supply.

Opportunities: Yes. As a cannabis attorney I understand the best way to legalize & regulate to protect public health & safety giving Texans an opportunity to share in the economic opportunity. Texas ag can flourish by growing more fruits, vegetables & high-value crops. California produces more than 70% of U.S. fruits and vegetables — too many eggs in one basket. We need to diversify & support small operators.

Priorities: Economic survival, rural health care, & climate change—and they are intertwined. I will look for opportunities, analyze the data, advocate to the USDA to change counter-productive policies, and help producers find a path to prosperity and environmental sustainability. Failing rural hospitals are an existential threat to rural communities. Texas must expand Medicaid to save them.

Campaign Website: <https://www.hays4ag.com/>

RAILROAD COMMISSIONER

Six-year term. The Railroad Commissioner is one of the three-member Texas Railroad Commission. The commission regulates the oil and gas industry, gas utilities, pipeline safety, safety in the liquefied petroleum gas industry and surface coal and uranium mining. It has no regulatory authority concerning railroads. Current salary: \$140,937

» QUESTIONS TO CANDIDATES

Natural Gas Facility Weatherization: What further changes, if any, are needed to ensure that Texas has sufficient power in times of extreme weather conditions?

Emissions: How important is the impact of methane emissions on climate change? What are effective ways to reduce methane emissions in the oil and gas industry?

Seismic Activity: How can the Railroad Commission reduce the risk of seismic activity or earthquakes caused by water disposal from oil and gas drilling?

Ethics: Since candidates for Railroad Commission often raise money from the oil and gas industry, how can citizens be assured that campaign donations will not influence how commissioners regulate that industry?



» Wayne Christian (R)

Natural Gas Facility Weatherization: During Winter Storm Uri, wind generated less than 6% of our electricity

despite averaging 23% during 2020. Natural gas generated 67% of our electricity during the storm despite averaging only 46% in 2020. The RRC has designated natural gas facilities as critical during energy emergencies and put in place weatherization requirements to ensure even better performance in future.

Emissions: Oil and gas production and a clean environment are not mutually exclusive; the six-major pollutants regulated by the EPA have decreased by 77% over the last 50 years. The current Administration's methane rule and natural gas tax could shut down oil and gas production in Texas which would kill jobs, harm our economy, increase costs to consumers, and reduce the reliability of our grid.

Seismic Activity: The RRC has in place some of the most stringent rules on disposal wells — the type of wells some link to earthquakes — in the country. Infact, Obama's EPA stated in a report that the Railroad Commission is "commended for establishing new regulations specific to seismicity, including solidifying RRC authority to take appropriate action related to injection well operations."

Ethics: I have never allowed a political contribution to influence my decisions in elected office. I have followed all Texas Ethics Commission rules regarding when I can accept contributions and have in full transparency reported every contribution I have received. I have never received an ethics complaint or violation as Railroad Commissioner.

Campaign Website: <https://ChristianForTexas.com>



» Luke Warford (D)

Natural Gas Facility Weather-

ization: Strengthening our energy infrastructure is my number one priority

because it is unconscionable that Texans have to live in fear that their power will go out the next time it gets cold. I will establish a clear, substantive, and enforceable weatherization standard, identify critical gas producers, and ensure preparations for the next major storm are actually completed.

Emissions: Methane emissions play a large role in climate change, and the Railroad Commission has a tremendous capacity to address climate change by reducing methane emissions while strengthening the Texas economy. I will accomplish this by enforcing existing regulations, limiting the number of flaring exemptions the Commission grants, identifying and plugging methane leaks, and capping orphaned wells.

Seismic Activity: The Railroad Commission's lackluster approach is responsible for the recent increase in seismicity in West Texas. And now, their response to what is happening is unscientific and out-of-touch with the realities on the ground. The Commission should work with affected communities and experts in the water disposal industry to develop a science-based response to the increase in seismic activity.

Ethics: My only priority will be to serve the people of Texas. This job is too important, and the stakes are too high to be influenced by the oil and gas executives we're supposed to be regulating. Last winter's storm is a prime example, where over 700 people lost their lives because the Commission failed to hold the gas producers that fund their campaigns accountable.

Campaign Website: <https://lukewarford.com>



» Jaime Andres Díez (L)

Natural Gas Facility Weatheriza-

tion: The RRC has taken good steps to fix issues concerning critical infrastructure

designations with ERCOT and weatherization requirements. However, there continues to be issues with data management, transparency, and with outlining how they will deal with repeat non-compliance. Regarding repeat weatherization non-compliance, I think the RRC should consider waiving the maximum fine of \$1 million.

Emissions: Reducing methane is the most effective strategy for dealing with climate change. Imposing restriction on flaring will reduce methane in TX, but will increase overall methane emission. Flaring/barrel in TX is amongst the lowest in the world. Flaring restrictions will cause forced closure of wells and increases in for-

eign (less-green) extraction. Solution: Bitcoin mining pays operators to not flare

Seismic Activity: There's no one-size-fits-all-solution since seismic activity resulting from water disposal varies greatly due to local geologic formations. However, the RRC must recognize that local entities have a disproportionate share of the risks and limited \$ benefit. I would favor moving authority downwards to allow local officials, who are more responsive to local voters, to determine the risk/trade-offs.

Ethics: I pledge that I will only serve one term. Once elected on November 8th, I will stop fundraising. Also, if it ever comes up that as Commissioner I need to vote on an issue that pertains to some donor or associate, then I will recuse myself from that vote.

Campaign Website: <https://www.vote4diez.com/>



» Hunter Wayne Crow (G)

Natural Gas Facility Weatheriza-

tion: I would recommend that we invest taxpayers money toward the devel-

opment of Renewable Energy Technology such as wind, solar, geothermal, conservation and small-scale hydro-electric. Once we have one or more of these methods fully utilized. We would be able to supply a vast amount of energy that would be able to resolve the State of Texas current energy demands.

Emissions: Methane is the second most abundant anthropogenic GHG after carbon dioxide (CO₂), accounting for about 20 percent of global emissions. Methane is more than 25 times as potent as carbon dioxide at trapping heat in the atmosphere. I will support the enactment of bans on hydraulic fracturing for natural gas and oil on the local, state and federal level and also ensure not further damage occurs.

Seismic Activity: I will support measures that will make Hydraulic fracturing in any form illegal. I will also support shutting down any drilling rig that would be considered to be located in unstable areas of Texas. I think if we ended the United States dependence on fossil fuels we would not have these problems any longer.

Ethics: I can't speak for the other candidate's but as the Green Party Nominee for the Texas Railroad Commission. I will say candidate's in my party are typical disallowed from accepting any PAC, Super-PAC, or corporate contributions. Most Voters do end up supporting Green Candidates due to them having no connections or ties to the oil and gas industry and among other things.

Campaign Website: <https://sites.google.com/view/hunter-crow-for-txrrc2022/home>

» VOTING FOR JUDGES IN TEXAS

Although in some states, judges are appointed, in Texas most judges are elected.

Judges make decisions about fundamental issues that affect all of us . . . family life, education, health care, housing, employment, finances, discrimination, civil rights, public safety, and government actions. It is critical that our judges make fair decisions based upon open-minded and unbiased consideration of the facts and the law in each case. Judges must know the law and not be influenced by any external political and economic factors.

How is the Texas court system organized?

The Texas court system is made up of a statewide network of trial courts and appellate courts. In trial courts, judges and/or juries evaluate the facts and the law and make a decision in a civil or criminal legal dispute. When decisions in most trial courts are appealed, they are sent to an appellate court where judges consider what happened at the trial court, evaluate legal arguments, and then decide if a mistake was made.

See <https://www.txcourts.gov/media/about-texas-courts/> for more information.



JUSTICE, TEXAS SUPREME COURT

Six-year term. A justice is one of the nine-member Supreme Court, which issues final decisions on civil and juvenile appeals, issues certain orders to governmental officials to act and to individuals to appear before the court, and has jurisdiction over orders or judgments of trial courts, if the Supreme Court determines them important to the jurisprudence of the state. Current salary range: \$168,000 to \$201,600

» QUESTIONS TO CANDIDATES

Ethics: Since judicial candidates solicit donations and raise money to be elected, how can voters be assured that campaign donations will not impact how judges interpret the law and/or review lower court decisions?

Standards: Texas requires that candidates for this Court be licensed in Texas for at least 10 years and have no suspensions or revocations in that time. What are the positive and negative impacts of this requirement?

Equity: What can be done to improve access to justice for all, including persons or groups who may be underserved?

Other Issues: What issues do you believe will be the most pressing for the Texas Supreme Court?

» PLACE 3



» Debra Lehrmann (R)

Ethics: As Senior Justice on the Supreme Court of Texas, & after many years of judicial service, I have a proven record of fairly and impartially applying the law in every case. It is critical that we consistently & rigorously apply the rule of law across the board, to supporters and non-supporters alike. The risk diminishes when judges employ sound & stable methods, as I have for many years.

Standards: This Constitutional Amendment raised the basic minimum requirements for this office. Because Texans deserve a high-quality judiciary, these standards are essential. But, they are not rigorous enough. I have over 3 decades of judicial experience & have received many awards for exemplary judicial service. Lawyers & non-lawyers have recognized my scholarly, consistent & responsible approach.

Equity: If justice is denied to one individual, it is denied to all. During my tenure on the Court, we have made great progress in improving access to justice for all persons, regardless of financial means. We have devoted much time & effort towards increasing public & private support for expanded representation of underprivileged Texans. Proud of these efforts, I intend to expand upon this work.

Other Issues: Regardless of the subject matter, enforcing the rule of law in a consistent, scholarly, methodical, impartial & fair manner is of utmost importance. As the overseer of the 3rd branch of government, the Court must also ensure that rules governing our court system, and members of the Bar & Judiciary, serve the public in an efficient and just manner. These Court responsibilities are essential.

Campaign Website: <https://Justicedebralehrmann.com>

JUSTICE, TEXAS SUPREME COURT

(continued)



» Erin A. Nowell (D)

Ethics: It is incumbent on judges to conduct themselves in a manner that leaves no doubt as to their integrity and fairness. Judges should take steps to avoid both impropriety and the ‘appearance’ of impropriety. This could include not soliciting campaign donations from individuals with cases pending before them and/or recusing themselves from hearing cases where a ruling could be questioned.

Standards: Licensing and conduct requirements help to ensure that the individuals elected to be judges have the requisite experience and character to serve the individuals in their courtrooms. The only negative impact of this requirement may be the exclusion of candidates with extensive practice outside the state of Texas.

Nonetheless, these qualifications help instill faith in the judiciary.

Equity: First, we need to increase the individuals in the pipeline who are available and willing to assist those in underrepresented communities – in every level of the judicial system. We also need to support (with both work and money) programs and initiatives that seek to provide equal justice access for all.

Other Issues: The U.S. Supreme Court has increasingly divested itself of jurisdiction over issues it has determined belong to the individual states. Examples include gerrymandering, voting rights, and a woman’s right to bodily autonomy. Accordingly, these issues will continue to arise within our state courts. As new laws are passed, interpreted, and even contested, the Texas Supreme Court will be the forum.

Campaign Website: <https://www.justicenowell.com>



» Thomas Edward Oxford (L)

Ethics: They cannot, we see evidence of justice for sale on a regular basis.

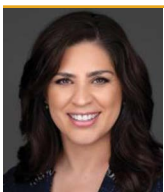
Standards: The positive is obvious, we need experience on the bench. The negative is the clear restriction on the rights of voters to make the decision without arbitrary restrictions.

Equity: We must continue to support and improve the

IOLTA program and the pro bono efforts of the local bar associations.

Other Issues: The Jury system has been under attack in Texas for years. Powerful special interest groups have funded judges who believe they are in a better position than juries to decide questions of fact. We must continue to push for a system in which judges decide questions of law and juries decide questions of fact.

» PLACE 5



» Rebeca Huddle (R)

Ethics: I have authored over 400 reasoned judicial opinions. This body of work demonstrates my fidelity to the rule of law. My opinions explain why I decided each case as I did and show that I apply the law fairly, in every case, regardless of who the parties or lawyers are or

whether they contributed to my campaign. My record also shows I have ruled against campaign contributors many, many times.

Standards: Supreme Court Justices should be experts in Texas law, with long experience. They must be persons of integrity and strong moral character, with sterling reputations. Texas’s licensure requirements weed out unqualified candidates, and I support them. Their

JUSTICE, TEXAS SUPREME COURT

(continued)

» Rebeca Huddle (R) (continued)

only negative impact is that lawyers who are new or have been disciplined cannot serve. But that is appropriate in my view.

Equity: The Court's Access to Justice Commission works to expand access to free legal services. More lawyers should volunteer pro bono (free) representation of poor Texans, and courts should encourage and recognize lawyers who do. Technology can also help. The Supreme Court now permits Zoom hearings in routine hearings, so Texans can participate in court proceedings without missing a day of work.

Other Issues: Court backlogs are a pressing issue in some big-city trial courts. If criminal judges don't move dockets, dangerous offenders roam the streets instead of facing punishment. If civil judges don't move dockets, Texas families and businesses wait too long for resolution. I believe Texas judges must always be accountable to the people and dispose of cases responsibly, but as promptly as possible.

Campaign Website: <https://www.rebecahuddle.com>



» Amanda Reichel (D)

Ethics: While there is always the possibility of influence, strict limitations on judicial campaign contributions along with campaign finance disclosure requirements provide safeguards against abuse. This possibility is also why it is imperative that we elect and retain judges with unimpeachable integrity and a demonstrated commitment to fair play and their oath of office.

Standards: The positive to this requirement is that in theory it is designed to ensure a qualified judiciary. The negative is that in practice it doesn't. Many attorneys

have practiced over 10 years and have never been inside a courtroom, and many have practiced fewer than ten years and have more courtroom experience than some attorneys see in a lifetime. But disciplinary requirements ensure integrity.

Equity: Increased access to pro bono services, more funding and resources available for legal aid organizations, simplifying the filing process, and removing other artificial barriers to accessing the legal system.

Other Issues: A slew of "hot button" issues that implicate some of our most basic liberties which counsels quick resolution, but at the same time are emotionally charged and complicated.

» PLACE 9



» Evan Young (R)

Ethics: First, all Supreme Court decisions are published, so our rulings can be tested for consistency, legitimacy, and sound reasoning. Second, the Judicial Campaign Fairness Act strictly limits how much judicial candidates can receive from individuals, firms, and PACs. No

source can be more than a small percentage of a judicial campaign's funds, which helps reduce even the appearance of undue influence.

Standards: Texas deserves the highest quality judiciary. These basic standards, which the voters wisely approved by constitutional amendment, promote competence. One risk, though, is that some voters may assume that anyone who meets these minimum requirements is

JUSTICE, TEXAS SUPREME COURT

(continued)

» Evan Young (R) (continued)

automatically qualified. Longevity and a lack of formal discipline is not enough. Voters must remain fully engaged to elect the best Justices.

Equity: Ensuring open courts is fundamental to public confidence in our judiciary and to protecting individual rights. The Access to Justice Commission, Texas Legislature, and Texas Supreme Court have made great progress in marshaling public and private support and resources for expanded representation of underprivileged Texans and making judicial proceedings more efficient, comprehensible, and fair.

Other Issues: Among its most pressing work, the Supreme Court must ensure, even in times of crisis, and without fear or favor, that the U.S. and Texas Constitutions' limits are respected—the lines between different branches of government, between the state and local governments, and between government power and individual liberty. The Court must make sure that the law is followed, wholly aside from politics.

Campaign Website: <https://JusticeEvanYoung.com>



» Julia Maldonado (D)

Ethics: In my case, I know that my obligation is to follow the law and to serve all of the residents of the state without regard of any campaign donations

made to my campaign. As a district judge, I have a record of integrity and ethics that will continue when elected to the Supreme Court, I have never allowed any campaign donation to influence my decisions which are always in accordance with the law.

Standards: The positive impacts are, the experience practicing, learning about different areas of the law and improving professionally. It is important that the judges, charged with the interpretation of the laws have the utmost ethical behavior and no record of misconduct. The negative impact regarding the length of time is that young lawyers are unable to participate at this level of the judiciary.

Equity: Increase funds for nonprofits who provide services for low-income Texans, ensure that there are educational materials in different languages regarding the court processes. Motivate big firms to provide pro bono services and create partnerships with law schools so that law students can hone their skills while providing much needed legal help under the supervision of their professors.

Other Issues: Equity and access to justice are two of the most pressing issues. We have to ensure that the rights of every Texan are protected and that everyone, regardless of their socio-economic status, has access to justice. The justices have to ensure that Texans feel confident with the Court's actions at all times.

Campaign Website: <https://www.maldonadofortexas.com>

JUDGE, TEXAS COURT OF CRIMINAL APPEALS

Six-year term. A member of the nine-member court which has final judgment in all criminal cases. The court must review all cases in which the death penalty is assessed. It also exercises discretionary review in other criminal cases and issues orders to government officials to act and individuals to appear before the court. Current salary range: \$168,000 to \$201,600

» QUESTIONS TO CANDIDATES

Ethics: Since judicial candidates solicit donations and raise money to be elected, how can voters be assured that campaign donations will not impact how judges interpret the law and/or review lower court decisions?

Philosophy: What is your judicial philosophy?

Standards: Texas requires that candidates for this Court be licensed in Texas for at least 10 years and have no suspensions or revocations in that time. What are the positive and negative impacts of this requirement?

Equity: What can be done to improve access to justice for all, including persons or groups who may be underserved?

» PLACE 2

» Mary Lou Keel (R)

Unopposed

» PLACE 5

» Scott Walker (R)

No response received by the print deadline



» Dana Huffman (D)

Ethics: The judicial conduct commission and the oath taken hopefully provide assurances that donations will not affect legal interpretation(s).

Philosophy: To see that justice is done.

Standards: Positive: ensures that a candidate has substantial years of legal experience needed. Negative: Some attorneys may have accumulated more practical

experience specific to their bench than another attorney who has practiced longer but not necessarily in matters specific to the court.

Equity: More access to pro bono representation as well as access to language lines that cover all languages at every proceeding

Campaign Website: <https://judgehuffman.com/home-1>

JUDGE, TEXAS COURT OF CRIMINAL APPEALS

(continued)

» PLACE 6



» Jesse F. McClure, III (R)

Ethics: Judges take an oath to rule impartially, and should remove themselves from a case when they cannot. Voters should educate themselves about all

candidates for elected office, including judges, and evaluate their track records and campaign promises. Since I have not knowingly received campaign money from a party appearing before me, voters can be sure that contributions have not influenced me.

Philosophy: I follow the text of the constitutional provision or statute in question. It is rarely, if ever, proper for a judge to depart from the plain, original public meaning of the text. When dealing with “non-textual” issues, I strive to bring common sense to my decision making, always keeping in mind that vindicating the rights of the citizen is paramount.

Standards: The positive impact of the requirement is that it helps promote experience (and ethical conduct) so that Judges have sufficient experience in the law before making very important decisions that effect the life and liberty of the litigants before the Court. The negative impact could be that a very qualified, but relatively inexperienced lawyer is unable to join this Court.

Equity: In the criminal justice system, indigent defendants at the trial court level are appointed counsel, and we need to ensure that such counsel are competent, fairly compensated, and have reasonable caseloads. In the civil system, other states have experimented with allowing non-lawyers to handle certain matters - an innovation worth evaluating to allow greater access to Texas courts.

Campaign Website: <https://VotejudgeJesse.com>



» Robert Johnson (D)

Ethics: The truth? There is no way voters can be one hundred percent certain campaign donations will not impact judicial decisions. That’s why I favor a

system that provides for equal public funding for judicial elections, just as I support a non-partisan judiciary. A judge’s decision should be based on legal precedent. If you vote for me, I promise to decide cases according to the law.

Philosophy: My judicial philosophy can be summed up in three words: Less is more. The less a judge attempts to impose his or her will on judicial decision making the more consistent our application of the law will be. Ultimately, this job is not about me or my opponent. This job is about you and all of our fellow Texans. I will remain focused on upholding the letter and spirit of the law as it is written.

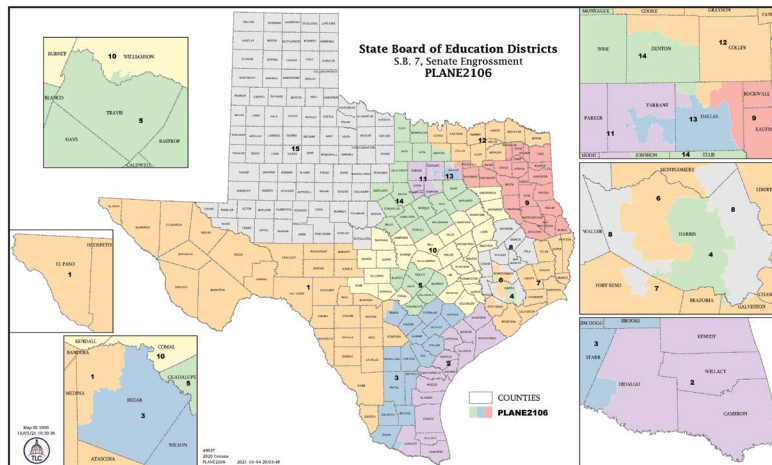
Standards: The Court of Criminal Appeals is the highest appellate court in the state concerning criminal matters. This court hears only criminal cases. Judges who serve on the highest criminal court should also have the highest level of experience in practicing criminal law. I have, nearly, two decades of criminal law experience. While ten years is adequate, I believe two decades is better.

Equity: I believe our State Bar has set high standards for the representation of indigent and underserved persons/ communities, but we can do more. We should incentivize pro bono legal services for large law firms by providing discounted bar dues and continuing legal education fees for those who show a set minimum number of indigent defense hours. Our justice system is only as fair as it is perceived.

Campaign Website: <https://www.judgerobertjohnson.com>

STATE BOARD OF EDUCATION

Four-year term. The fifteen-member board decides curriculum, standards, student testing, special education programs, and textbooks for Texas public schools. It also oversees the Permanent School Fund. Members of the board are not paid, but receive reimbursement for expenses incurred in the course of official business.



» QUESTIONS TO CANDIDATES

Charter Schools: What is the impact of independent charter schools on the funding for local public schools? And is there anything you would do to change that impact?

Inclusive Education: As the developer of Texas public school curriculum, how would you ensure a comprehensive history education that addresses the needs of all students?

Teacher Certification: Are you in favor of replacing the current teacher exam process? Why or why not?

Other Issues: What other issues do you believe will be the most pressing for the State Board of Education?

» DISTRICT 1



» Michael Stevens (R)

Charter Schools: In order to negate the financial impact of charter schools, two things need to be changed. First, the SBOE must increase the rigor of their vetting process, to ensure that pop up schools are not approved. Secondly, in order to keep schools fully funded, we need to fund them based off of their enrollment numbers and not based on average daily attendance.

Inclusive Education: In order to ensure a comprehensive history education that addresses the needs of all students, I would advocate for a Social Studies curriculum that is based on historical factual evidence. Additionally,

I would support curriculum that provided students with an overview of our nations history from the perspective of all those who were part of that history, not just a Eurocentric point of view.

Teacher Certification: Yes, I am in favor of replacing the current teacher exam process. The current exam process should be streamlined to test a candidate over scenarios that are directly applicable to the grade level they want to teach.

Other Issues: The SBOE needs to consider removing STAAR testing as a requirement for graduation.

Campaign Website: <https://Votedrstevens.com>



» **Melissa N. Ortega (D)**

Charter Schools: Independent charter schools divert crucial resources away from public schools. Charter schools do not have public oversight of how money is spent & are not held accountable and to the same standards as public ISD's. I would work to ensure that compliance with state quality standards, governance requirements, and financial accountability is created, monitored & held to the same standards as ISD's

Inclusive Education: History should be taught to incorporate diverse perspectives and acknowledge that historical events are affected by race, ethnicity, culture, religion, education, gender, gender identity, sexual orientation, disability, and personal experiences. An effective history builds on students' capacity for research, reasoning, generating logical arguments, and critical thinking.

Teacher Certification: I support measures to ensure that Teachers are highly qualified SBEC certified. Being a certified SBEC teacher means that a teacher has undergone the rigorous process of completing an approved Texas Educator Preparation Program sanctioned by the state of Texas. When working with students, standards for the teaching profession must be at the highest level and sanctioned by the state.

Other Issues: Other issues that are most pressing will be to create significant efforts for teacher retention, and solutions to our state's test-based accountability system. Class size limits need to be re-evaluated, and a more inclusive curriculum that focuses on the social emotional learning needs of our students need to be in place.

Campaign Website: <https://www.drmelissaortega4txsboel.com/>

» DISTRICT 2

» **LJ Francis (R)** No response received by the print deadline

» **Victor Perez (D)** No response received by the print deadline

» DISTRICT 3



» **Ken Morrow (R)**

Charter Schools: Charter schools have a positive impact by creating competition and alternatives to Public Schools, but they are still regulated by SBOE.

Inclusive Education: Truth should be taught. We do not need to re-write history. We need to teach world history, US History and Texas History with the truth about our History. We were founded as a Christian nation. Slavery and Domination of the American indians was an awful chapter in our countries history. Other coun-

tries have been far worse. We were one of the first countries to ban slavery. America is exceptional!

Teacher Certification: I dont feel adequately informed on this issue to respond. I want qualified, caring teachers to teach our childern to be life-long learners.

Other Issues: Isssues I believe will be relevant. School safety is a priority, I think the Guardian plan has merit. CRT has no place in Texas Schools. Boys are boys, Girls are Girls. No confusion should be allowed in locker rooms, bathrooms, or in sports.

Campaign Website: <https://Kengmorrow.com>



» Marisa B. Perez-Diaz (D)

Charter Schools: Because charter schools receive state funding based on ADA, but no local tax revenue, the fiscal impact on traditional public schools varies depending on location of the charter school. More pertinent is the unilateral authority the Commissioner of Education has on the expansion approval of charter schools. The over saturation of charter schools in communities leads to more serious funding impact.

Inclusive Education: I will continue to work with subject matter experts (K12 practitioners and historians) who would: a) contribute content that is diverse in representation (i.e. individuals, communities, and events that have been absent in standards but have played pivotal roles in the history of the US); b) provide guidance about pedagogy, methodology, and content for implementation considerations.

Teacher Certification: At a time when teacher recruitment and retention efforts are in dire straits, it would not make any sense to move forward with a full-on replacement of the exam process which could potentially establish additional barriers to classroom teaching. That said, I would support an updating of the certification process, specifically regarding the expectation of pre-service classroom time.

Other Issues: The SBOE will continue to approve standards for K-12 curriculum, which should be influenced by facts, peer reviewed research, and inclusivity. Additionally, major responsibility for the PSF has moved to a corporation, currently comprised of 5 SBOE members & 3 governor appointed individuals. That governing body must continue to require 5 elected SBOE members for continued democratic representation.

Campaign Website: <https://www.marisabperez.com>

» DISTRICT 4

» Staci Childs (D)

Unopposed

» DISTRICT 5



» Perla Muñoz Hopkins (R)

Charter Schools: As a parent & certified teacher all I know is public school. The impact of charter schools increasing in number is largely due to the lack of valuable resources & parental rights. Raising the bar, strengthening the curriculum standards, & recommending the most educational texts will ensure a quality public education. I support parents' choice because we all want what's best for our children.

Inclusive Education: As a multi-ethnic & retired

military family, my diverse children being taught proper Reading, Writing, Science, Math, Civics & History is crucial for their success. Inclusive Education should never involve identity politics & personal agendas. The SS TEKS need revision, I recommend subject matter experts & work groups that include SBOE observers to provide the best framework, scope & sequence.

Teacher Certification: Teachers have a lot on their plate, especially in our current education climate. The SBOE opposed the EdTPA contract, and I agree with the decision, because the proposed substitute certification tests used by SBEC are not as comprehensive or

» Perla Muñoz Hopkins (R) (continued)

desirable as the existing exams. As a teacher in TX, the current certification exams I took were rigorous & rendered the proper measurement & evaluation.

Other Issues: Communication & transparency with constituents & parents is a must & adheres to Ed Code Ch 26 Parental Rights & Responsibilities. Adopting en-

gaging & high-quality materials & establishing curriculum standards centered on instruction that promotes a growth mindset & essential skills in Reading, Writing, Math, Science & Civics leads to meaningful learning & helps a child reach their American Dream!

Campaign Website: <https://www.PerlaHopkins.com>



» Rebecca Bell-Metereau (D)

Charter Schools: Most charter schools take in money from tax payer funding for education that goes out of state, and they enroll significantly fewer special ed students with serious disabilities than traditional public schools do. Washington Post notes that “Rocketship has a narrow curriculum” on “reading, math, and test prep,” and teachers are not prepared, with high turnover. Texas policy favors them unfairly.

Inclusive Education: Teachers trained in inclusive education should make those decisions, and the state should fund schools well, in order to help all of our students. We have tried on the board to include all students, but the Republicans blocked our efforts to find a compromise on history curriculum, voting to put off having a review of the curriculum until after 2025, so we’re operating on outdated biased history.

Teacher Certification: The current certification needs improvement, but I voted to put off making training more difficult because of the teacher shortage. Once we have more teachers willing to teach, we should revisit plans to change to a more rigorous certification system. For the time being, we need to allow multiple ways to qualify for certification; we shouldn’t punish teachers who stop teaching out of necessity.

Other Issues: The influence of radical groups that disrupt the process of curriculum revision, without studying the changes being proposed, are a big problem. They fixate on a few items that they dislike and then manage to flood emails, testimony and meetings, convincing some to toss out curriculum created by hard-working teachers who volunteer their time and expertise. This discourages future volunteers.

Campaign Website: <https://voterebecca.com/>

» DISTRICT 6



» Will Hickman (R)

Charter Schools: I am in favor of school choice. Any student who is not present in class in their local ISD school reduces the funding for that school, whether they are absent, home school, private school, charter school, or somewhere else. We need to ensure that local ISD schools are the best education option for the families in the area.

Inclusive Education: I drafted and the SBOE adopted a new K-8 social studies framework that has two years of world, US, and Texas history in grades 3-8, as well as enhanced K-2 content. We will work with work groups to prepare K-12 social studies TEKS to prepare all Texas students for their future.

Teacher Certification: Yes, although I joined all of my SBOE colleagues in vetoing the new edTPA exam, I have not talked to anyone who loves the PPR. I am in favor of multiple high quality portfolio exam options,

» Will Hickman (R) (continued)

and increased accountability for low quality alt-cert providers.

Other Issues: The most important issue for me is Texas 60% CCMR numbers. I have chaired the ad-hoc Flight Plan committee which is updating the TEKS for a

new flight plan course to replace the existing career exploration and college prep courses. A flight plan is essentially an IEP for every child. Please reach out if you would like more details willhickmancampaign.com

Campaign Website: <http://willhickmancampaign.com>



» Michelle Palmer (D)

Charter Schools: Charter schools receive substantially more money per student than public schools. In addition, the average charter school has MANY fewer special education students than the local public schools in their neighborhood. I would vote against approval of any new charters school applications that come before the Board until the rules have changed to make it more equitable

Inclusive Education: As a history and government teacher, I try to bring in other perspectives to every unit. Every student in Texas deserves to see their ancestors represented in the curriculum taught in Texas classrooms. I would bring in diverse teachers and historians to help develop the curriculum and vote FOR their changes.

Teacher Certification: I don't believe the test is a good indicator of preparation for the classroom. However, The suggested portfolio is classist. It is too extreme and would cost several thousand dollars to complete. Perhaps a scaled-down version that would do more to show preparation for the classroom but not exclude so many people would be best.

Other Issues: The social studies curriculum approval being put off until 2025 is a huge problem. In addition, the science curriculum needs to include climate change and we need comprehensive sec education in our health classes and Health needs to be a required class to graduate in every district in the state not just those that choose it.

Campaign Website: <http://palmerfortexased.com>

» DISTRICT 7

» Julie Pickren (R) No response received by the print deadline



» Dan Hochman (D)

Charter Schools: Voucher programs would siphon away funding for public education to charter schools, which spend more on administration but pay teachers less. Charter schools also are not required to educate students with disabilities, do not require teacher certification, and may close with little notice. I support policies that have for-profit schools be paid for by parents who choose to go that route.

Inclusive Education: Every student needs to learn the truth when it comes to historical events, including facts that may be difficult or challenging. Otherwise, we are doomed to repeat the mistakes of the past. For example, there have been proposals in Texas to teach an "opposing view" of the Holocaust; to me, there is no alternative explanation to the facts that led up to this mass murder event.

Teacher Certification: Yes. The current exam, the Pedagogy and Professional Responsibilities exam, is not an adequate test of a new teacher's potential. I support

» Dan Hochman (D) (continued)

an alternative approach, including more comprehensive teacher training requirements and an improved exam. I feel strongly that a new exam should not be more expensive than the current process, as these costs may create a barrier to entering the profession.

Other Issues: Over the last decade, when adjusted for cost-of-living, Texas spending dropped to a little over

\$8,000 per student, with Texas ranked 48th out of 50 states. Multiple studies reveal that there is a direct link between per-pupil spending and student achievement. Teachers also need to be paid a fair salary that reflects countless hours of hard work of degreed and highly trained professionals.

Campaign Website: <https://hochmanforsboe.com>



» Alan Pyeatt (L)

Charter Schools: As parents seek alternatives to public schools, especially in the wake of the Uvalde shooting and

other events, the costs for public schools is clearly reduced. As a result, we would expect the public school revenues to reflect that decrease in costs.

Inclusive Education: IMHO, our country is experiencing turmoil because we have forgotten our founding philosophy. It is not enough to know that our Founders rooted our government in the theories of John Locke

and Algernon Sidney, if we do not know, for example, the goal of government, or what Locke said are the government's three legitimate functions. I intend to ensure that their actual philosophy is taught.

Teacher Certification: I have not yet reached a conclusion on this matter.

Other Issues: I believe that it is vital to learn critical thinking skills in school. As a result, I will advocate that every high school student be required to pass a course in applied logic before graduation.

Campaign Website: <https://www.electpyeatt.com>

» DISTRICT 8



» Audrey Young (R)

Charter Schools: Public charter schools do not draw property tax funds.

Funding for traditional schools allows for the collection of property taxes. The additional per-pupil allocation by the state for charter schools assists in covering the gap in funding. Charters are a choice for parents and students along with private and home-school. Each educational choice has its own impact within a community.

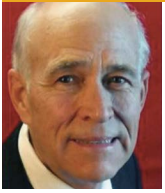
Inclusive Education: The SBOE oversees the Texas Essential Knowledge and Skills by which instructional materials (curriculum) is developed. Local school districts have the legislative right to adopt the curricu-

lum that best suits the needs of their students within the community.

Teacher Certification: No I am not in favor of adopting a national program for teacher certification. I am in favor of developing a program that is specific to Texas that sets high expectations, is implemented with fidelity, and aligns with T-TESS.

Other Issues: Legislation, which previously removed the authority of the State Board to approve all instructional materials, should be re-written to require that all core content (Math, Science, ELAR, and Social Studies) curriculum MUST be adopted by the SBOE prior to district adoption.

Campaign Website: <https://YoungSBOE.com>



» Rhett Rosenquest Smith (L)

Charter Schools: Due to: schools becoming “targets of violence,” Covid pandemic risk concerns, and financial (tax \$) restraints, Texas voters must re-think the funding of our public schools. Texas Libertarians support freedom and choice, and we believe that allowing funding to follow the school choice that each student makes regarding their own well-being will provide the safest, healthiest, and wisest funding use.

Inclusive Education: Our campaign is supports developing curriculum in nontraditional languages, and curriculum re: Spanish Colonial history — late 18th century period (the American Revolution) and 19th century Mexican history that’s fundamental to understanding contemporary Texas. Also, millions of immigrants

histories, Mexican, African, not forgetting indigenous Native American, Asian & Pacific Island history

Teacher Certification: Teacher exam process seems cumbersome; local decisions are better, if unnecessary bureaucracy can be eliminated we benefit

Other Issues: Our campaign will work to provide a “community college (dual-credit) alternative” for every Texas student and family! However, if voters, citizens, and taxpayers like their traditional school system that was in place during this past year (and prefer to keep it) that will be an option, but I will work to disclose the tax dollars required to maintain an outdated educational framework

Campaign Website: <https://rhetttrsmith-txsboe.wixsite.com/my-site-1>

» DISTRICT 9

» Keven M. Ellis (R)

Unopposed

» DISTRICT 10

» Tom Maynard (R)

Unopposed

» DISTRICT 11



» Patricia "Pat" Hardy (R)

Charter Schools: There is a great deal of debate about the drain that charter schools have on the regular public school. Logic would tell you there is some drain causing me to be very selective as to which charters I support. When charters provide a unique reason for their existence such as a recent one specializing in Autism or providing a choice in an area where there are only failing schools,, I will support.

Inclusive Education: I contend that our SS standards currently ensure a comprehensive social studies education. The SBOE has made a concerted effort to do so. To add to that, we have two state approved electives in ethnic studies, Mexican American and African American Studies and working to add an American Indian Studies and Asian-American Studies within the next two years.

Teacher Certification: Yes. Apparently parts of the current test are weak. I favor working on improving the test but not creating such burdensome test that we lose good teacher prospects due to the cost or something that presents a tremendous time strain on the student teacher. This should be developed in a collaborative effort comprised of colleges of education with a successful track record.

Other Issues: The most pressing at this in time is the adding the civics requirements called for in SB3 into our current SS TEKS. The reviewing of upcoming legislation and possible effects on Texas public schools is time sensitive. Two ongoing responsibilities are assuring quality instructional materials aligned to our standards and reviewing of charter school applications.

Campaign Website: <https://hardyforeducation.com/>



» Luis Miguel Sifuentes (D)

Charter Schools: Because funding is based on student enrollment, as students move from public schools to charter schools, they take their student allotment with them at a time when our public schools need funding the most. Public schools are the backbone of our communities. I would advocate for equitable, fair and transparent funding of our schools.

Inclusive Education: As a former educator and social studies teacher, I became very familiar with the TEKS. As a general principle, curriculum and instructional material should be based on fact and inclusive of the good, the bad and the ugly. The SBOE should be inclusive curators of history, ensuring that the identities of all students are included, not just the identities of a few.

Teacher Certification: I am in favor of looking at our teacher certification more closely with a continuous improvement mindset. Jumping into a new exam process without fully vetting the new exam would be a mistake. We have to ensure that the new teacher exam is equitable and addresses the current issues.

Other Issues: The SBOE should work to ensure that they are transparent in their decision making while getting feedback from its customers: educators, parents, and students. I will work to ensure that the voices of parents, educators, and students are solicited and acted upon.

Campaign Website: <https://www.LuisMiguelSifuentesforTexas.com>

» DISTRICT 12

» Pam Little (R)

Charter Schools: Funding comes from the legislature not the State Board of Education. The SBOE has a veto over the recommendations from the Commissioner of Education. I prefer to see charter schools that fill a niche the public isd's do not.

Inclusive Education: The State Board only writes standards, not curriculum. It is up to the local school districts to determine the curriculum, i.e. how the standards are implemented. It is important that all our students have the opportunity to see themselves in our standards.

Teacher Certification: This is a decision made by

the State Board of Education Certification not the State Board of Education. The SBOE has oversight of this board. The current certification is weak and should be replaced however an equitable certification should be investigated to get the best choice for our teachers.

Other Issues: I believe the most pressing issue for the SBOE is to regain some authority over the instructional materials process. In 2011 SB6 diluted the SBOE oversight of instructional materials and at that point we started to see our scores spiral downward. Districts can now purchase whatever they want with or without SBOE approval. Assessment is another important issue however that is under the commiss

» Alex Cornwallis (D)

Charter Schools: Charter schools cannot generate property tax revenue or hold bond elections to raise funding and, as a result, are fully funded by the state. Charters receive more per student from the state than public school districts and have double the operations costs compared to public schools. Yes, we now have a system that allows charter schools to grow, which is not sustainable.

Inclusive Education: Our history must not be changed or whitewashed. We should set an example for our children by telling them the truth and not hiding the facts.

Teacher Certification: Let us sit with the educators and listen to them first and find out what the barriers are in the current certification process. Then together, design a certification process that will be easily attainable and address the teacher shortage.

Other Issues: Funding our public school system is a significant issue. There are nontax funding sources at the state and federal levels that I will advocate tapping into to fix our public education crisis. This method of funding will not raise taxes.

Campaign Website: <https://www.alexforeducation.com/>

» Christy Mowrey (L)

Charter Schools: Charter schools receive less funding and spend an average of 2K less per student. Charter schools create competition and introduce innovation in education. I support any effort to give families more options and educational freedom, especially when it means less burden on the taxpayers.

Inclusive Education: History should be taught based on facts, not political opinions. I do not support teaching history through the lens of the oppressed or oppres-

sor. The curriculum should be politically neutral, factual, and appropriate for the age level taught.

Teacher Certification: Due to the teacher shortage, I would be in favor of alternative options. The teacher exam should focus on the particular subject taught rather than a broad, sometimes trivial, set of questions. Teachers may be very strong and passionate in one area and weak in another. The ability to effectively teach, passion, and creativity are more important than passing an exam.

Other Issues: The State Board of Education will be faced with many difficult and controversial issues. Many

» Christy Mowrey (L)

members feel the need to appease their political party or special interests when it comes to making decisions. I'm held accountable to the families and children in my dis-

trict. Every decision will be based solely on if it will benefit children and taxpayers and give more freedom and choice to parents.

Campaign Website: <https://christymowrey.org>

» DISTRICT 13



» Kathryn Monette (R)

Charter Schools: I don't think there is a financial impact taken away from local public schools. They receive less per child and it is up to the charter school to secure a building for teaching. Charter schools don't receive funds from local tax revenue, but they do receive private donations. Charter schools offer families a choice in education and provide other options for students.

Inclusive Education: History is history regardless of culture or background. The difference is choosing what parts to emphasize and expound on. I believe that all history needs to be taught equally. American exceptionalism should also be taught as well as the Constitution, the Bill of Rights, the Federalist Papers and the May-

flower Compact. They should be taught fairly and non-partisan without political agendas.

Teacher Certification: The teacher exam process is important, but I think also a program like they have in Florida would be advantageous. Florida encourages veterans to be teachers and streamlines the process.

Other Issues: Education needs to be about teaching the core subjects of math, English, writing, science, music, reading, history and geography. All the social emotional learning of the day should be left to parents to teach instead of the schools. Teach character and respect for others instead. No sex ed under 6th grade of any kind in school. Parental rights and transparency of all teaching materials.

Campaign Website: <https://KathrynMonette.org>



» Aicha Davis (D)

Charter Schools: Please see my recent OpEd in the Fort Worth Telegram, titled "Charter schools' growth need review as it costs TX districts," discussing the funding impact for local isds //

Inclusive Education: In my first term, I successfully led the adoption of African American Studies as a TEKS based course available statewide, and now I'm leading Native American Studies. During the current social studies review, I've fought tirelessly for truth and inclusion in each of our courses. I work directly with diverse advocacy groups and experts to better incorporate the cultural richness of America,

Teacher Certification: I am in favor of an exam process that ensures teachers have foundational skills to

meet diverse student needs. I also believe exams should be financially supplemented to allow more opportunities to recruit teachers. I voted against EdTPA because of the dismal results in other states. I have concerns with language in the PPR, and look to develop more equitable ways to measure readiness.

Other Issues: The SBOE has the responsibility of reviewing resources districts may adopt to accompany TEKS. The process has become extremely politicized, leading to the denial of any resources for elementary health TEKS last year. After the current social studies review, the SBOE will have to review new resources. Previous history books had inaccurate language and did not fairly represent women or minorities.

Campaign Website: <https://www.aichadavis.com/>

» DISTRICT 14



» Evelyn Brooks (R)

Charter Schools: The level of impact independent charter schools have on the funding for local public schools is not the same for each ISD community. Texas charter schools are open enrollment with no tuition. Charter schools receive state taxpayers' dollars but do not receive any local taxpayers' dollars. All parents have the right to choose the type of educational environment they wish for their children.

Inclusive Education: The motto "E Pluribus Unum" served as our nation's first motto meaning "Out of Many One." America's rich history encompasses many ethnicity groups and nationalities coming together to make America the great nation it is today, and should be taught interwoven as one historical strand, as opposed to being taught in separate courses based entirely on race. College courses offer ethnic studies.

Teacher Certification: I am not in favor of replacing the current teacher exam process, because the current process ensures that all teachers complete educational requirements, pass required teacher certification exams and pass a background check. Doctors, pilots, lawyers, and many other specialty professions require these same measures to ensure quality and competence. In all, I earned certification in four states.

Other Issues: I believe the most pressing issues for the State Board of Education will continue to be writing and setting superior academic curriculum standards that are free of political agendas and activism, with the focus of preparing a highly educated society with virtues once again. Of further concern is the Permanent School Fund's ability to guarantee school bonds.

Campaign Website: <https://www.evelyn4texaseducation.com/>



» Tracy Fisher (D)

Charter Schools: The impact of charters on local funding is monumental as all school funding comes from the same bucket, comprised of state and local taxes. Due to how the State has accommodated charters, they receive an average of \$1150 more per student/year than public schools. Their funding comes without the accountability or oversight mandated to local schools. I will advocate for equity and accountability.

Inclusive Education: I will engage highly-qualified education professionals to review and confirm that the content addresses the needs of students from all backgrounds. I will ensure history experts review the current curriculum for complete historical accuracy. I am a fierce advocate for Texas parents, kids, and communities. I am the experienced candidate to prepare our kids for their world.

Teacher Certification: Yes, we need to recruit and build a pipeline of highly-qualified teachers. Their exam process should NOT be financially burdensome. Also, we need to implement an exam for charters. Currently, only 57% of our public ed teachers have degrees in education, and the remainder is alternately-certified. We know, on average, that alternatively-certified and charter teachers have higher turnover rates.

Other Issues: Additional pressing issues I've identified for SBOE: Keep politics out of education; Implement fewer high-priority learning standards to focus on deep learning and what is essential for our kids; Respect local control to meet the needs of all kids; Maintain veto power over new charters, and gain control over charter amendments; Ensure fiscal responsibility over the permanent school fund.

Campaign Website: <https://www.tracyfisherfortexas.com/>

» DISTRICT 15

» Aaron Kinsey (R) Unopposed

CHIEF JUSTICE AND JUSTICE, COURT OF APPEALS

Six-year term. Courts of Appeals hear appeals on civil and criminal cases from lower courts in their districts. Current salary for Chief Justice: \$187,800. Current salary for Justice: \$154,000 to \$184,800.

» TEXAS COURT OF APPEALS SERVES THE FOLLOWING TEXAS COUNTIES:

The 1st Court of Appeals: Austin, Brazoria, Chambers, Colorado, Fort Bend, Galveston, Grimes, Harris, Waller, and Washington

The 2nd Court of Appeals: Archer, Clay, Cooke, Denton, Hood, Jack, Montague, Parker, Tarrant, Wichita, Wise, and Young

The 3rd Court of Appeals: Bastrop, Bell, Blanco, Burnet, Caldwell, Coke, Comal, Concho, Fayette, Hays, Irion, Lampasas, Lee, Llano, McCulloch, Milam, Mills, Runnels, San Saba, Schleicher, Sterling, Tom Green, Travis, and Williamson

The 4th Court of Appeals: Atascosa, Bandera, Bexar, Brooks, Dimmit, Duval, Edwards, Frio, Gillespie, Guadalupe, Jim Hogg, Jim Wells, Karnes, Kendall, Kerr, Kimble, Kinney, La Salle, Mason, Maverick, McMullen, Medina, Menard, Real, Starr, Sutton, Uvalde, Val Verde, Webb, Wilson, Zapata, and Zavala

The 5th Court of Appeals: Collin, Dallas, Grayson, Hunt, Kaufman, and Rockwall

The 6th Court of Appeals: Bowie, Camp, Cass, Delta, Fannin, Franklin, Gregg, Harrison, Hopkins, Hunt, Lamar, Marion, Morris, Panola, Red River, Rusk, Titus, Upshur, and Wood

The 7th Court of Appeals: Armstrong, Bailey, Briscoe, Carson, Castro, Childress, Cochran, Collingsworth, Cottle, Crosby, Dallam, Deaf Smith, Dickens, Donley, Floyd, Foard, Garza, Gray, Hale, Hall, Hansford, Hardeman, Hartley, Hemphill, Hockley, Hutchinson, Kent, King, Lamb, Lipscomb, Lubbock, Lynn, Moore, Motley, Ochiltree, Oldham, Parmer,

Potter, Randall, Roberts, Sherman, Swisher, Terry, Wheeler, Wilbarger, and Yoakum

The 8th Court of Appeals: Andrews, Brewster, Crane, Crockett, Culberson, El Paso, Hudspeth, Jeff Davis, Loving, Pecos, Presidio, Reagan, Reeves, Terrell, Upton, Ward, and Winkler

The 9th Court of Appeals: Hardin, Jasper, Jefferson, Liberty, Montgomery, Newton, Orange, Polk, San Jacinto, and Tyler

The 10th Court of Appeals: Bosque, Brazos, Burleson, Coryell, Ellis, Falls, Freestone, Hamilton, Hill, Johnson, Leon, Limestone, Madison, McLennan, Navarro, Robertson, Somervell, and Walker

The 11th Court of Appeals: Baylor, Borden, Brown, Callahan, Coleman, Comanche, Dawson, Eastland, Ector, Erath, Fisher, Gaines, Glasscock, Haskell, Howard, Jones, Knox, Martin, Midland, Mitchell, Nolan, Palo Pinto, Scurry, Shackelford, Stephens, Stonewall, Taylor, and Throckmorton

The 12th Court of Appeals: Anderson, Angelina, Cherokee, Gregg, Henderson, Houston, Nacogdoches, Rains, Rusk, Sabine, San Augustine, Shelby, Smith, Trinity, Upshur, Van Zandt, and Wood

The 13th Court of Appeals: Aransas, Bee, Calhoun, Cameron, De Witt, Goliad, Gonzales, Hidalgo, Jackson, Kenedy, Kleberg, Lavaca, Live Oak, Matagorda, Nueces, Refugio, San Patricio, Victoria, Wharton, and Willacy

The 14th Court of Appeals: Austin, Brazoria, Chambers, Colorado, Fort Bend, Galveston, Grimes, Harris, Waller, and Washington

» See VOTE411.org to compare Court of Appeal candidates in your district.



» HELPFUL CONTACTS AND WEBSITES

League of Women Voters of Texas

lwtexas.org

Secretary of State

VoteTexas.gov

Your County Election Website

<https://www.sos.texas.gov/elections/voter/links.shtml>

Election Protection

866OURVOTE.org

Voter Hotlines!

- English: 866-OUR-VOTE or 866-687-8683
- Spanish: 888-Ve-Y-Vota or 888-839-8682
- Asian: 888-API-VOTE or 888-274-8683
- Arabic: 844-YALLA-US or 844-925-5297
- Disability Rights TX: 888-796-VOTE or 888-796-8683

Republican Party

texasgop.org

Democratic Party

txdemocrats.org

Libertarian Party

lptexas.org

Green Party

txgreens.org



EMPOWERING VOTERS. DEFENDING DEMOCRACY.

The LWV is a nonpartisan political organization and is one of America's most trusted grassroots organizations! We aim to:

- Achieve a free and fair democracy
- Increase participation in government
- Expand voter participation in Texas
- Create a League that is diverse, equitable, and inclusive.



League of Women Voters of Texas Voter

Education Chair: Dorothy Marchand

Production Team: Community Impact, Inspirare Communications, Jaci Collins, Motto Publishing Services

Volunteer: Rachel Schick



» TEXAS LOCAL LEAGUES

Learn more about our local Texas Leagues and how they help shape today's important issues by visiting lwtexas.org.

Amarillo

Austin Area

Bay Area

Baytown

Brazos Valley

Collin County

Comal Area

Cooke County

Corpus Christi

Cy-Fair

Dallas

Denton

El Paso

Fort Bend County

Hays County

Hill Country

Houston

Irving

Lubbock County

Midland

Montgomery County

Richardson

Rio Grande Valley

San Antonio Area

South Central Texas

Southwest Texas

Tarrant County

Tyler/Smith County

Victoria

Waco Area

Wichita Falls

Wilson County

Williamson County





» **VOTERS GUIDE SPONSORS AND SUPPORTERS**

LWV Texas *Voters Guides* are funded by the League of Women Voters of Texas, a 501(c)(3) corporation that is supported by contributions from individuals, corporations, and foundations. We would like to acknowledge the following generous *Voters Guide* sponsors and the League's major donors, as well as the donations from all our supporters which make the publication of the *Voters Guide* possible.

Gold Voters Guide Sponsors

Crossroads Cattle

Silver Voters Guide Sponsors

Texas Association of School Boards

Texas Nurses Association

Bronze Voters Guide Sponsors

Dorothy Marchand

Elaine Wiant

Irene Temple

Julie and Michael Lowenberg

Major 2022 Contributors

Deb Treece

Deborah and John Kochevar

Diedre Doyle

Elisabeth MacNamara

Elizabeth Branch

Grace Chimene

Joyce LeBombard

Ken Caldiera

Kevin Rowe

Lance & Erin Ramsey

Meg Scott Johnson

Methodist Healthcare Ministries

Mr & Mrs Charles Parrish

Paul and Marian Cones

Relia Ma Scheib

Ruth Davis

Ruthann Geer

T. Michael O'Connor

Wild Thyme Fund

William and Wen Devanney Faily Fund

Wintemute Family Foundation

